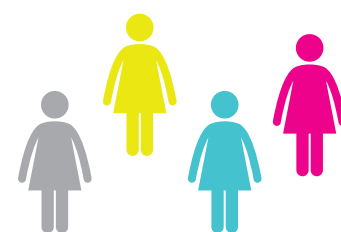


START SPREADING THE NEWS

2011/2012

OPINION

Featured opinion writer:
Ian MacDonald,
President,
Compassion House Foundation
Board of Directors



Four very determined women from our community, along with a campaign cabinet and a volunteer board of directors came together to care about women from outside our city. Together, with an absolute passion to help women coming to Edmonton for breast cancer treatment, they built something newsworthy—Sorrentino's Compassion House. And they had a lot of help. Venture into the house for a tour and see the donor wall—a who's who of those familiar caring people and companies in our community that always seem to step up when needed.

That was ten years ago. And since the opening, hundreds of women from over 150 communities across Alberta and beyond our provincial borders have had their lives changed forever when they stepped into unfamiliar territory and became part of the fabric of this special house. And hundreds more have been turned away because we simply didn't have a room for them.

It may look on the surface that we offer accommodations to women from out of town as they are receiving treatment for breast cancer. But that is only the physical space part. The other part—the support and the incredible connection that occurs when guests meet and quickly realize they are not alone. That there are other women on a similar cancer journey. That they can be themselves. They can open up. Or hide out. That is the power of compassion at work.

And here we are at the end of an incredibly busy year. It is a year full of exciting change. We are embarking on a new journey to more than double the size of the house. A campaign cabinet was formed, and a goal of \$5 million was set. And we're happy to say we are well on our way. We have received an overwhelming \$1 million gift from the Eldon and Anne Foote Fund to name the new expansion wing. And we have obtained generous funding from the communities we serve including Grande Prairie, Fort McMurray, and Yellowknife.

And there is no way any of this could have happened without our Executive Director Mellissa Kraft and her staff, our hard working and determined Board of Directors, support from our community and the communities we serve, and the more than 100 volunteers who commit to our organization every year.

We are thankful, yes. But we need your help. We need your help to start spreading the news about Sorrentino's Compassion House. We need your help so we can make our financial goal. And by raising the funds we can realize our organization's goal. To say yes to women who need us. Yes, we have room for you. Yes we can accommodate you. Yes we can help you in your time of need. Yes.

I can't imagine what those four maverick women were feeling 10 years ago when their idea became this house. Maybe it is similar to what I'm feeling today. I am so excited and proud to watch this expansion idea become a reality.

There are so many things to talk about in a year. But in my opinion it all comes down to one thing. Helping people. That's what we do here. And with your support we can ensure that more women can be helped.

visit us online at
compassionhouse.org

FEATURE

What if one day you woke up, turned on the television to the morning news and the host said "sorry everyone. No news. We've got nothing to say." Or worse, what if you woke up every morning to the same news. "In case you missed it over the past few years, here's the news...again..."

The latter is true with breast cancer. Same news. Almost the same number of diagnosed women every year (22,000). That's one in every nine women in Canada who will be diagnosed with breast cancer in their lifetime. It's the number one diagnosed cancer in women, year after year.

And the news about Sorrentino's Compassion House hasn't changed for years either. Full. Past full. Waiting lists. Turning away women who need the help, support, and accom-

modations as they face breast cancer treatment in Edmonton.

The news doesn't seem to change.

Until now.

Says Executive Director Mellissa Kraft, "we've been turning away women since we opened our doors in 2002. There is nothing worse than getting a phone call from a woman who needs our help and we have to say sorry, we're fully booked. The sound in their voice—it's heart-breaking. But we mean to change all that."

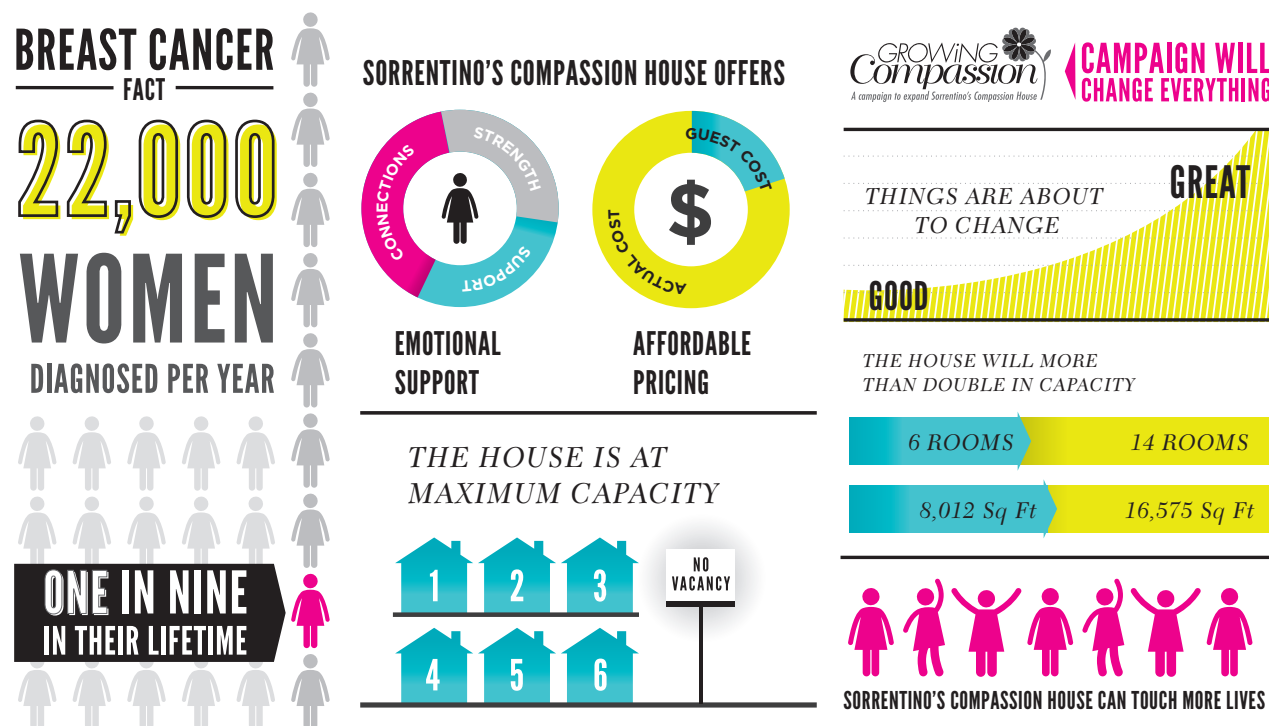
In 2011 Compassion House Foundation launched Growing Compassion, a \$5 million campaign to expand and renovate Sorrentino's Compassion House to more than double the capacity. From six suites to fourteen,

an expanded kitchen and dining area, a wellness centre, entertainment room, and an elevator that ensures the house completely accessible, the new house will mean everything to the strong women who come to the city to fight cancer.

And a campaign like this can only occur when people come together with these women in mind, and make a difference by raising funds to make change happen.

Says Shannon, a former guest, "When people ask me 'how are you feeling?' I tell them I'm tired. I tell them I'm sore. But I tell them that emotionally I am stronger than ever because of what happened to me at Sorrentino's Compassion House."

So there is news. Good news. This news changes everything. This news changes lives.



HOMES



Situated in the heart of the charming McKernan neighbourhood in Southwest Edmonton, the Sorrentino's Compassion House expansion will encompass three to six lots, and while it may be one continual connected property, it will appear to be three very distinct houses.

Included in this home will be warm and comfortable surroundings and really nice people, quality finishes throughout, and an elevator for your convenience.

Each suite will come completely furnished including two beds,

table, television, and private washroom.

The house will be move-in ready. And while we hope you never need to stay here you can rest assured we will be ready for you.

Sorrentino's Compassion House is only blocks away from the trendy Whyte Avenue area, with grocery stores, restaurants and other retailers within walking distance. Public transit is right outside the house for your convenience and connects you to the LRT system. So the city is at your doorstep.



Developer:
Sorrentino's Compassion House

Builder:
Cormode & Dickson

Architect/Engineer:
Stantec

Square footage: 16,515

Suites: 14

Parking: Stalls for 16 vehicles

EDITORS

BOARD OF DIRECTORS

Ian B. MacDonald
President
Janet Riopel
Vice President
Kathy Bonazew
Treasurer
Sandra Corbett
Secretary
Dena Carlson
Past President

DIRECTORS

John Cloutier
Grace Frey
Maureen Leslie
Marilyn Mucha
Tina Naqvi-Rota
Gord Syme
Kathy Trepianier
Debra Wooding
Christine Zwozdesky

Mellissa Kraft
Executive Director
Karen Percy Lowe
Honourary Chair

FINANCE

Compassion House Foundation remains grateful for the support it receives from both the community in which we reside and those that we serve. In the coming year we will continue to increase our fundraising efforts in order to further realize our vision.

Copies of our annual audited financial statements are available upon request by contacting our office at 780-425-7224.



Reports suggest Compassion House Foundation had a newsworthy year.

Read all about it.



CONTRIBUTORS

It takes a lot of people to make this kind of news. Every contribution makes the Sorrentino's Compassion House story better. Would you like to be a contributor? Call the newsroom at 780-425-7224.

GROWING COMPASSION DONORS

Thank you to the following individuals and companies who have made a \$100 or more commitment to our expansion campaign:

1164784 Alberta Ltd.
Dr. Mohamed Al-Hussein
Alberta Royal Purple Association
Allard Foundation Ltd.
Anonymous
Apex Oilfield Services / Sky of Dreams Aviation Trust
Aquaterra Utilities Inc
Arbutusview Services Ltd.
ATB Financial
Krista Betsle
Blue Frog Communications
Kathy Bonazew
Brenda Brent
Betty Carlson
Janell Carpenter
Anthony Chang
CIBC
Cliff Lede Family Charitable Foundation
John Cloutier
Coldwell Banker
Judy & John Cosco
County of Grande Prairie
Nancy Cumming
Don & Jean Danbert
Dianne & Irving Kipnes Foundation
Edcon Power Tongs and Oilfield Services Ltd.
Eldon & Anne Foote Fund at the Edmonton Community Foundation
Janice Euvastie
Fairley Erker Advisory Group
Shari Fallis
Gerry Fedio
Franklin Templeton Institutional
Grace Frey
Shirley & Jim Funk
Linda Georges
Hansen Ford Lincoln
Todd Hoskins
Lorraine Hoyt
Bette Hronek
Hub International Phoenix Insurance Brokers
IBM Canada Ltd.
Patrica Ingram
Wendy & Blaine Jackson

K.E. Zachewich Professional Corporation
Christine Kelemen
Kükmeel Corporation
Kükmeel Inuit Association
Kümuna Corporation
Kölping Society of Edmonton
Melissa Kraft
Norma & Larry Kruger
Lac La Biche Firefighter's Society
Edna Lamport
Larga Baffin Ltd
Maureen Leslie
Wendy Loar
Judith Lowe
Janet & Marvin Robinson
Ian & Joanna MacDonald
MacKay LLP
MacLab Enterprises
Donna MacLean
Shannon McCambley
McLennan Ross Barristers & Solicitors
Paula Michard
Kim Miller
Jim & Sandra Mones
Christine & David Moseley
Marilyn Mucha
Municipal District of Greenview No. 16
Municipal District of Smoky River No. 130
Stewart Munro
Lorraine Murias
Dr. Thomas & Melanie Nakatsui
Naqvi & Rota Families
Tania Nease
New Horizon Co-operative Ltd.
Robert & Bonnie Normand
North Kleskun Community Club
Nuna Logistics Limited
Numasi Corporation
Nicole Odland
Order of the Royal Purple
Heister #115
Order of the Royal Purple
Manning #79
Order of the Royal Purple
Vegreville #125
Judy Pilgrim
Polar-Vision Centres Ltd
Garry & Joyce Rathgeber
Darin & Barb Rayburn
Snyder Reins
Sherry Richier
Janet Rippe
Peter & Gail Rose
Rotary Club of Edmonton Mayfield - Fork it Over
Rotary Club of Grande Prairie
Rotary Club of Lac La Biche
Cynthia Rousseau
Glennia Russell
Bruce A. Saville
Harold Schmidt
Dorothy Scott
Paulette Seliski
M J Siebold
Graeme Sivertson
Sorrentino's Restaurant Group
Sharon Spencer
Spiral of Life Cancer Support Group
Marjorie Spornitz
Gord & Marcie Syme
Synchrude Canada
TELUS

Top Co LP
Kathy Trepanier
Trinity Helicopters
Marguerite Trussler
Patricia Turner
University of Alberta Campus Recreation - Big Pink Tournament
Barbara & Robert Walker
Lorne & Eliane Wight
William Schoepf Realty Inc.
William & Amy Yau
Gene & Christine Zwozdesky

IN-KIND

Aquila Productions
Cormode & Dickson
CTV Edmonton
Donna Brown Landscaping
Global Edmonton
McCallum Printing Group
mkm
Pattison
Stantec Architecture Ltd.
Stantec Consulting Ltd.
Thurber Engineering Ltd.

ANNUAL DONORS

The following list includes gifts of \$500 or more made from March 2011 - February 2012. We gratefully acknowledge and value all the donations we receive.

Action Flooring
Alberta Society of Radiologists
Anonymous
ATB Financial
Cecile Aubin
Dianne Balon
Belay Advisory Inc.
Barbara & Ed Biegel
Dr. David R Bunde
Dr. Paul Byrne
Cabrali & Co.
Coffee Gal
Phyllis Cordell
Judy & John Cosco
Dr. Kelly Dabbs
Dandy Oil Products Ltd.
John Day
Deloitte & Touche
Heidi Dennis
Dominion Messenger Inc.
Duncan & Craig Barristers & Solicitors
Susan Duery
Edmonton Gentlemen's Dinner Club
Edmonton Granite Memorials Ltd.
Edmonton Oilers Community Foundation
Fairley Erker Advisory Group
Field Law LLP
Cheryl Forbes
Forestburg Chapter #54
Fraser Milner Casgrain LLP
Andy Garrick
Deb Gordon

Government of Canada
Lorie & Paul Grundy
H Hamdon Stores
Carol Hagen
Dr. Dorolby Hardy
Hughes Petroleum Ltd
Hunford Developments
International Beauty Services
KCM Construction Ltd
Jocelyn Kennedy
Tony & Ursula Kenraghen
Wendy Kinsella
Deborah Krublak
Landmark Group of Builders
Landrex Developers
Ledcor Construction Ltd.
Helga & Gerry Levasseur
Dr. David & Ilse Li
Leab & Robert Lloyd
M.C. College Group Inc.
Jack & Lorraine McBatn
McGregor Sharp Filtering Equipment
Miller Thompson
MNP LLP
Modern Granite & Marble Inc.
Jim & Sandra Mones
Susan Moussa
Marilyn Mucha
Lewis Nakatsui
Dr. Thomas & Melanie Nakatsui
Javiad & Henrietta Naqvi
Tony & Tina Naqvi-Rota
Sylvia Nasseri
National Council Jewish Women
Nordic Mechanical Services Ltd.
North American Construction Group
Northgate Chevrolet Buick GMC LP
Order of the Royal Purple Lloydminster, SK
Order of the Royal Purple Ponoka #27
Order of the Royal Purple Sherwood Park #287
Order of the Royal Purple Tremville #248
Royal Purple Lodge Vegreville #125
Order of the Royal Purple Viking #122
Trish & Bill Page
Parlee McLaus
PWC Management Services LP
R.B. Williams Industrial Supply Ltd.
Vernon & Eileen Ralph
RICCI hair co.
Janet Rippe
River Cree Resort & Casino
RJA Medicentres Canada Inc.
Dr. Eric & Elexis Schloss
Shippers Supply Inc.
Ryan & Stacey Smyth
Sorrell Financial Inc.
Standard General Inc.
Sureway Construction Management Ltd.
Jack Swanson
Swimwear Etc.
San San Sy
TELUS
Dianne & Irving Kipnes Foundation
Great-West Life Assurance Company
The Met Agency Inc.
Kathy Trepanier
United Way of the Alberta Capital Region
Jim & Karen Webb
Keith & Lenora Weinbender
Jeanne West
Colleen Wilson
C.J. Woods
Woodvale Community League
Glen & Sandra Woolsey
York Realty Inc.

LETTERS

Dear editor:
"I was excited to get to the house and see that it was such a modern, new facility. It felt a bit like a vacation actually – getting to eat when I wanted, to sleep in the afternoon, to go for long walks and have time to reflect. I can't imagine what it would have been like to stay anywhere else."

Bev, a former guest of Sorrentino's Compassion House

Dear editor:
"When I first walked in, it felt like a mansion. I thought, I've never been in a house this big before! And the kitchen was great—it's where everyone hangs out, cooks meals and shares their stories."

Jennifer, former guest of Sorrentino's Compassion House

Dear editor:
"I'm very thankful for my experience there and I hope they can grow and expand. Sorrentino's Compassion House was a big part of being able to stay positive. It would be sad to have to turn women away. I can't imagine what that would feel like."

Judi, former guest of Sorrentino's Compassion House

Dear editor:
"It doesn't take long to bond with the women. You try to explain what chemo feels like to friends and family and it's so hard to put it into words. To be around people who understand, it makes such a difference. I walked in the door for the first time and was welcomed like I was an old friend coming home. I couldn't tell who were paid staff and who were volunteers -- everyone was so warm and welcoming."

Katherine, former guest of Sorrentino's Compassion House

Dear editor:
"I totally believe Sorrentino's Compassion House was a huge part of my recovery. It's such a great place and it needs to continue and grow. I hope I never have to go back to stay there, but just knowing it's there if I need it is a big comfort."

Lorna, former guest of Sorrentino's Compassion House

Dear editor:
"It is so important to be in a good place when you are going through such a bad thing. Women need a place to be allowed to talk about it. We need to be treated with respect and dignity. We're still the same people, even if we're missing a body part or two."

Patti, former guest of Sorrentino's Compassion House



START SPREADING THE NEWS

2011-2012 EDITION



Sorrentino's Compassion House
10909 76 Ave NW Edmonton, AB T6G 0J6
(780) 425-7224

